

CENTRAL LUZON MANUFACTURING AND LOGISTICS ZONE





CORRIDOR FOR MANUFACTURING/ LOGISTICS CLUSTER



- Covers more than 90,000 hectares
- Managed by 4 Government Corporations/Agencies under the PIPP program of the National Government
- Cluster: The Manufacturing and Logistics Area of Excellence
- Members: BCDA, CDC, SBMA, AFAB, BOI and PEZA



The Subic Bay Metropolitan Authority manages the Subic Freeport and develops it into a self-sustaining tourism, industrial, commercial, financial and investment centre.



The only freeport in the Manila Bay Area, the Philippines' center of trade, strategically located as transit point for global shipping.



The Bases Conversion and Development Authority is a major force in creating economic opportunities through its establishment of integrated developments.

Advantage for TAIWANESE INVESTORS



The Board of Investments assists Filipino and foreign investors to venture in economic activities in the country and serve as one-stop-shop in doing business in the Philippines.



The Philippine Economic Zone is mandated to encourage investments, extend assistance and grant incentives to investors, and register and facilitate business operations in selected areas throughout the country proclaimed as special economic zones.

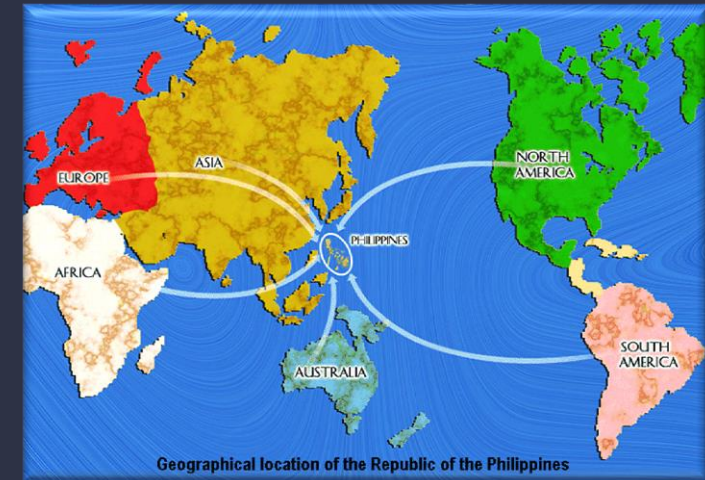


The Clark Freeport Zone is now envisioned as a premier logistics hub, a modern industrial estate and preferred service center in the Philippines.

STRATEGIC LOCATION

TAIWAN

PHILIPPINES



The country's location is a critical entry point to over 650 million people in the ASEAN Market and a natural gateway to the East-Asian economies.

DEVELOPED INFRASTRUCTURE

MAJOR SUPPORT INFRASTRUCTURES



**GUARANTEED CARGO
OPERATIONS**



**ENHANCES
STRATEGIC
LOCATION**



AIR

CLARK INTERNATIONAL
AIRPORT

NINYO AQUINO
INTERNATIONAL AIRPORT



ROAD

SCTEX
NLEX
TPLEX
ROMAN HIGHWAY



MARINE

PORT OF SUBIC
PORT OF BATAAN
PORT OF MANILA

Major support infrastructures are already well placed that help industries to be more competitive.



HIGH END FASHION HUB



INDUSTRIAL AND REAL ESTATE HUB



HAVEN FOR MANUFACTURERS



ELECTRONIC AND SEMI CON HUB



SHIPBUILDING HUB

TAX AND FISCAL INCENTIVES

Exemption from all Local and National Taxes

5% Special Gross Income Earned

Income Tax Holiday

Exemption from Real Property Taxes

Tax and duty free importation of equipment and raw materials

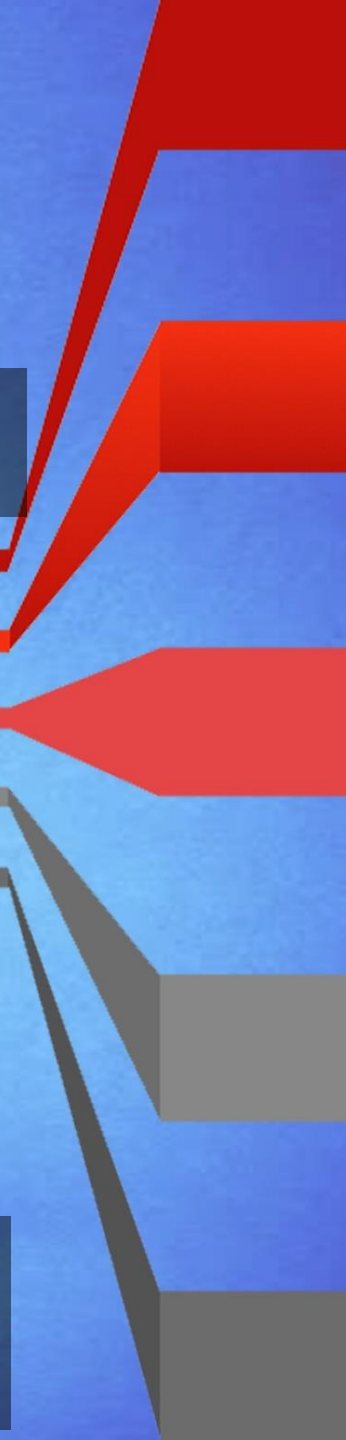
3

2

1

4

5



TAX AND FISCAL INCENTIVES

Free movement of Finished goods within the freeport

6

Special Visas for Investors

7

OTHER VALUE PROPOSITIONS

- US General System of Preferences covering 5000 products
- EU General System of Preferences (GSP+) covering more than 6000 products

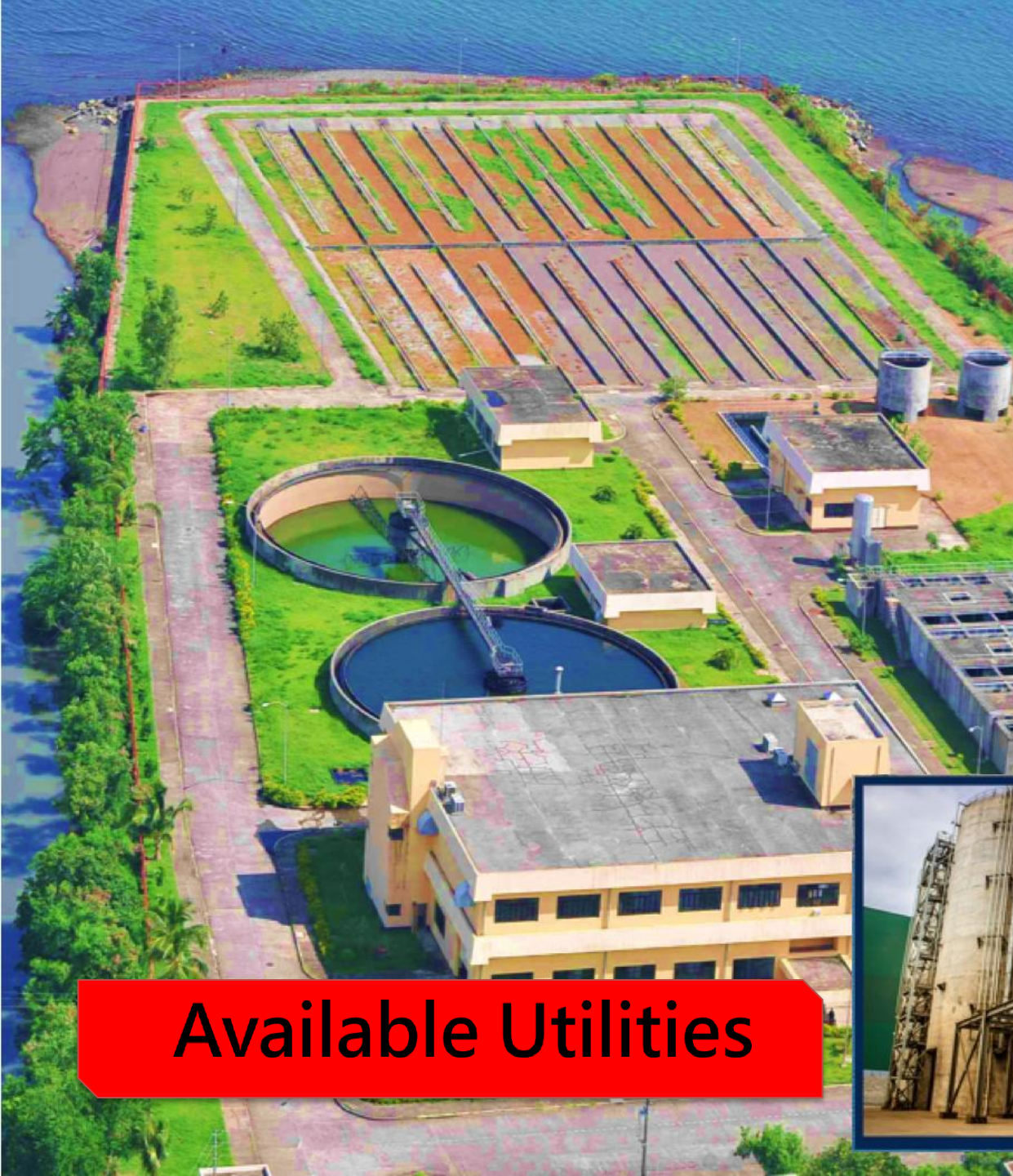


- **Highly-Skilled**
- **English-Proficient**
- **Work Values**
- **Long Retention Period**

Available Talented and Skilled Labor

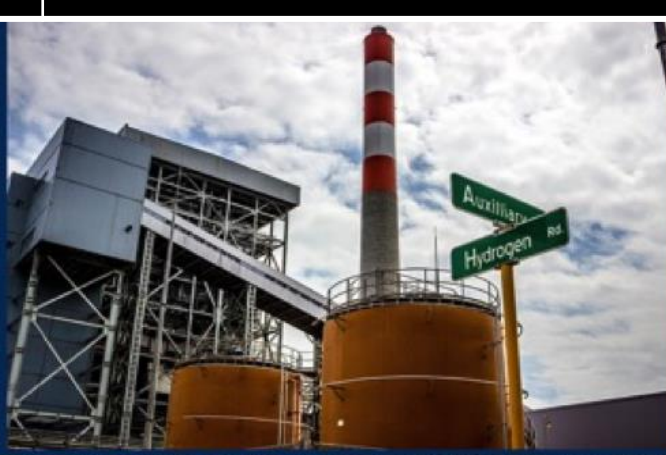


- Over 10M population and over 7M labor force in Central Luzon
- More than 270,000 tertiary colleges and universities schools in Central Luzon



Power	<ul style="list-style-type: none">• 600 MW power plant• Dual 230 KV line transmission facility• Power plant to be put up
Water	<ul style="list-style-type: none">• Water Dam• With treated water and waste water treatment facility
Telecoms	<ul style="list-style-type: none">• Dual fiber optic backbone• Digital exchange system• connecting more than 200 countries
Solid Waste	<ul style="list-style-type: none">• 100-hectare landfill facility that can accommodate municipal & hazardous waste
Liquid Gas	<ul style="list-style-type: none">• Large and stable volume of high purity nitrogen

Available Utilities





Inside the CMLZ, security is 24-7, there is ease in the flow of traffic with visible patrol monitoring the vicinity.

Secured Corridor



WORK-LIVE-PLAY

ENVIRONMENT

- Shop and Dine
- Play Golf
- Swim at the Beach or at our Water Parks
- Nature Treks
- Visit various theme parks, hotels and casinos
- Explore Sports and Adventure Facilities
- Rest and Relax at world-class spas and wellness centers

INDICATORS TO ATTRACT BUSINESS



TO THE PHILIPPINES

Labor Force

Low Philippine
Labor Cost



Inflation Rate

Low Philippine
Inflation Rate



GDP

High GDP
Growth Rate



Market

Growing Philippine
Market/ Big
Population



Less Dispute

Less probability of
Labor Dispute

Less Political
Problems with
the Philippines



English Skills

Excellent English
Skills



WE' RE **READY** FOR BUSINESS!

THANK YOU AND MABUHAY!

